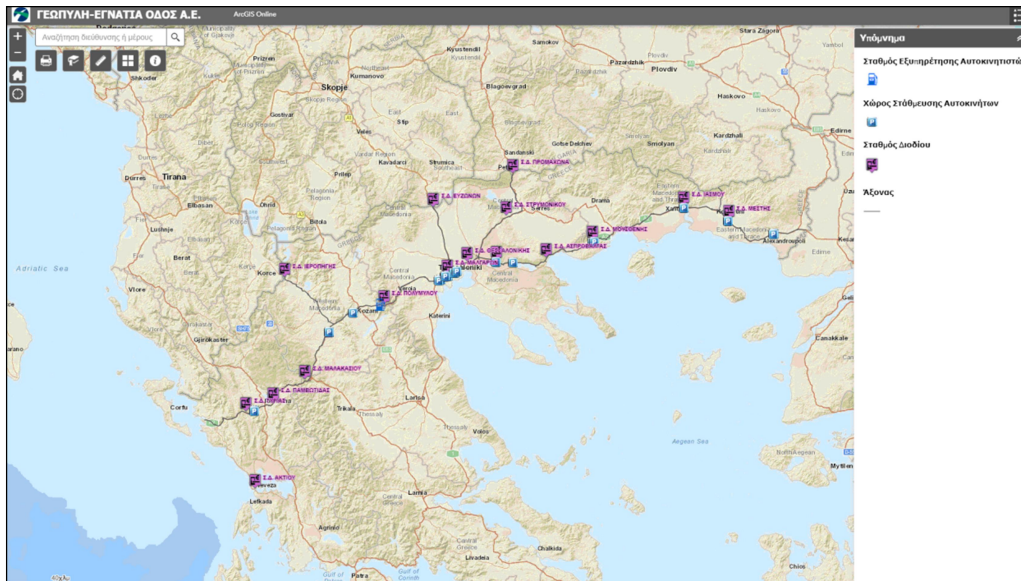


## Webmap «GEOPORTAL-EGNATIA ODOS SA-public viewing»

### Viewing instructions



The geospatial platform "GEOPORTAL-EGNATIA ODOS SA", manages project's geospatial information, through digital services, such as interactive applications Webmap apps, for direct viewing, through web browser.

The webmap application **"GEOPORTAL-EGNATIA ODOS SA-public viewing "**, displays the main information of Egnatia Odos highway, including the vertical axes.

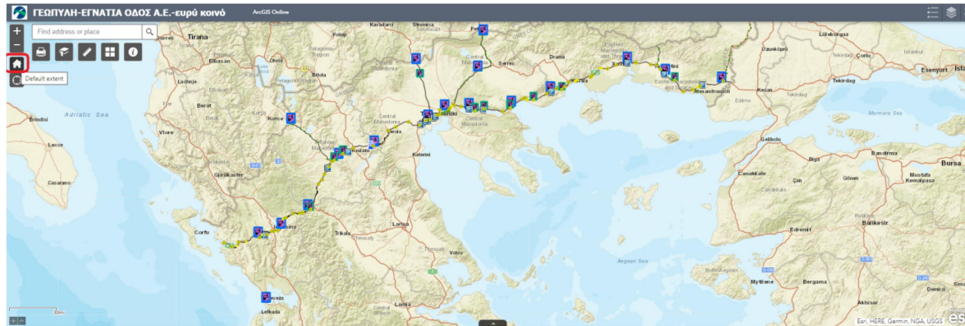
The application is accessible to the general public, with the sole use of viewing the information displayed.

*The information is intellectual property of "EGNATIA ODOS SA", apart from basemaps, which are an integral part of "esri platform".*

The following is a brief description of application's basic functionality.

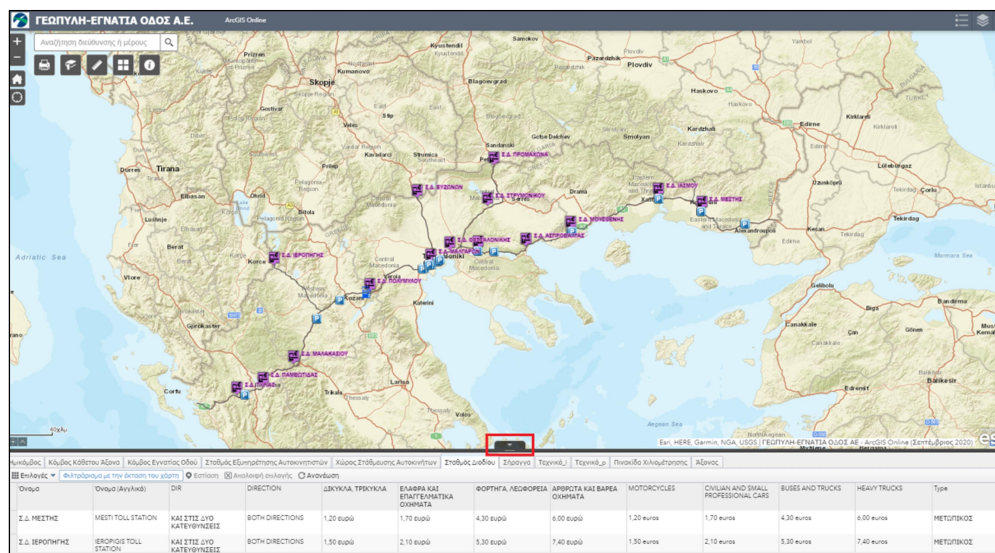
Through url <https://www.egnatia.eu/> the interactive map displays distinct geospatial information, which is thematic layers as lines, points and polygons. The map zooms in and out with the corresponding tools (+), (-), and returns to the original scale by selecting the Default extent tool in the red box in Figure 1.

Figure 1



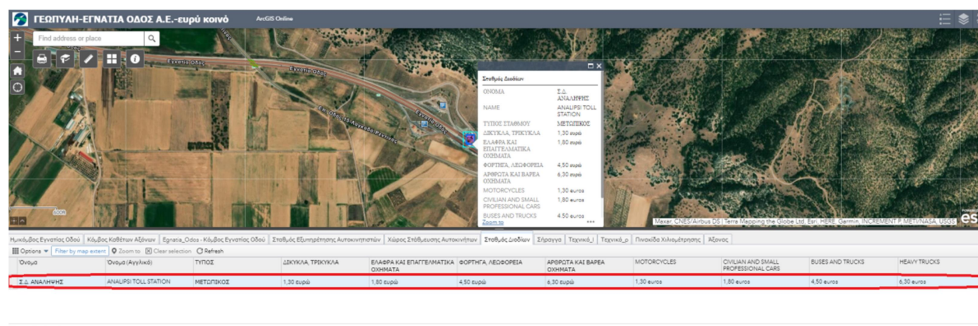
As shown in Figure 2, by selecting the indicator marked in the red box, at the bottom of the map, the descriptive information of the respective thematic levels will be displayed.

Figure 2



Direct navigation, by double click the relevant entry of the tables

Figure 3





## - Printing Tool



The user can export a printable file, in a suitable dimension. Basic settings enable the display of scale, memo, etc. In Figure 4 the area of interest and the print tool (in red box) has already selected and in Figure 5 the exported file has already printed.

Figure 4

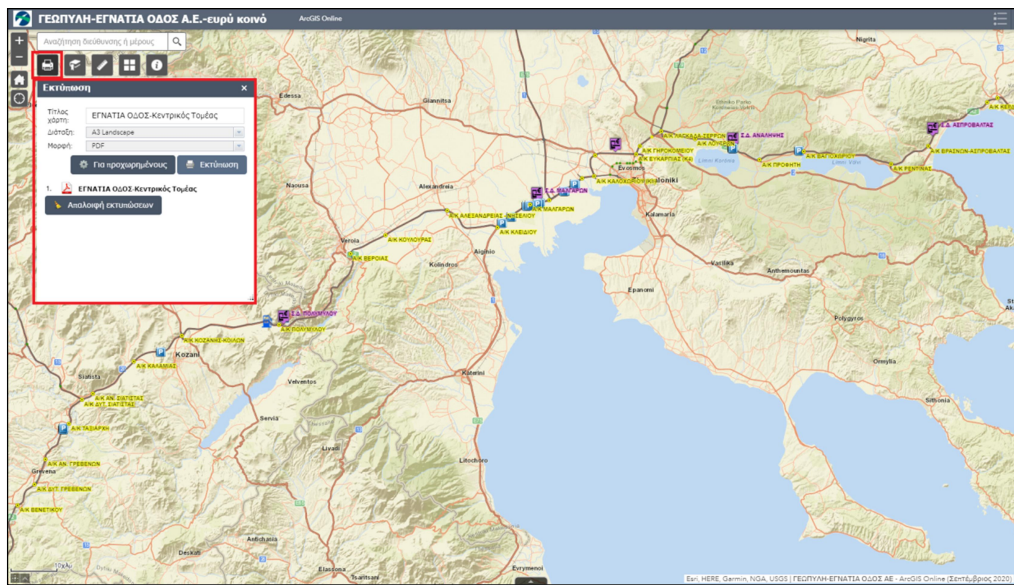
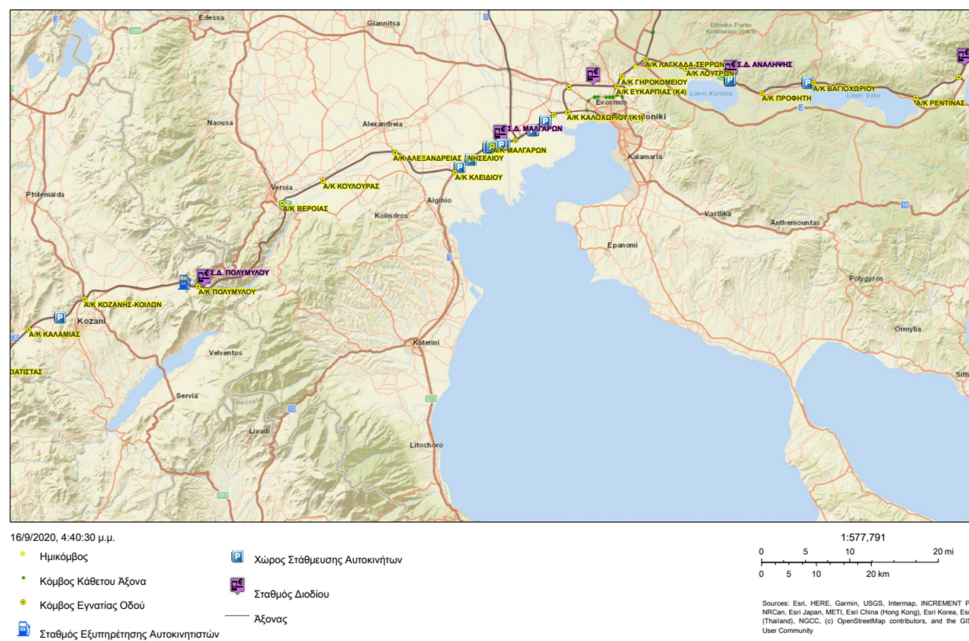


Figure 5

## ΕΓΝΑΤΙΑ ΟΔΟΣ-Κεντρικός Τομέας

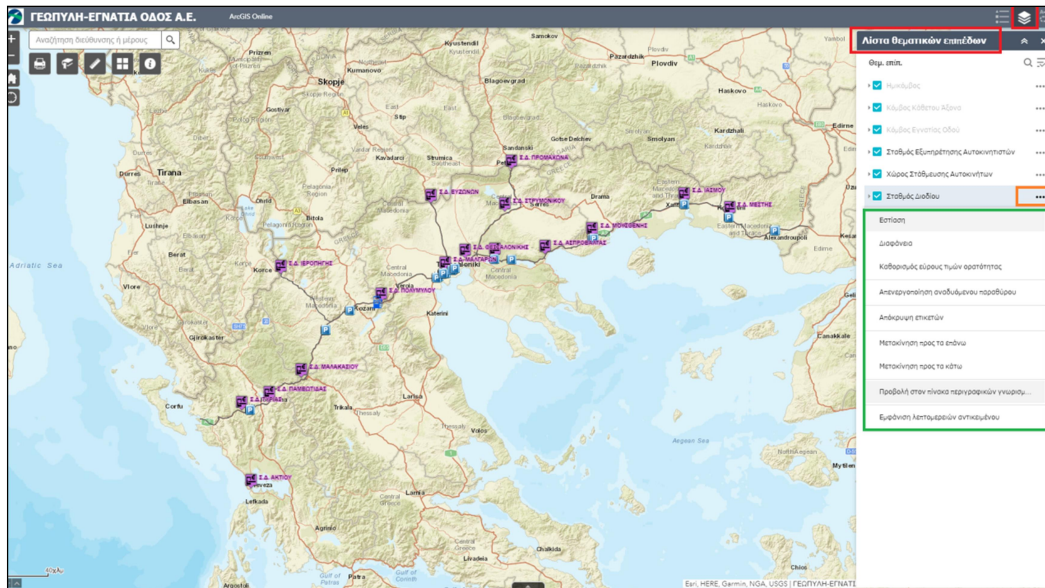


## -Appearance of Layer List



By selecting the **Layer List**, as shown in Figure 6 (in the red box), the user can see all the geospatial information displayed on the interactive map. In addition by selecting the three dots next to the name, of each level (in the orange box), it has at its disposal, additional display functionality.

Figure 6

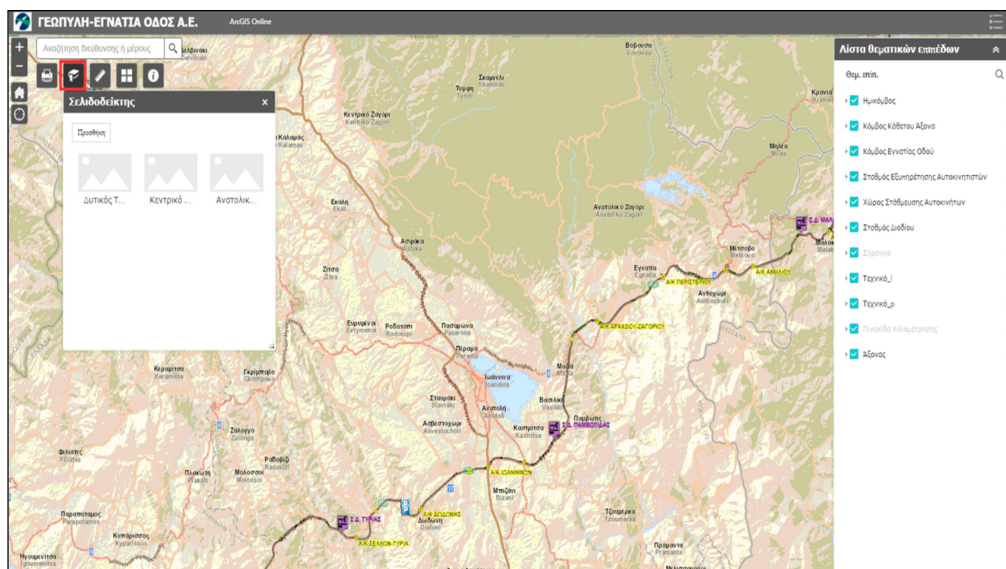


## -Bookmark Tool



By selecting the "Bookmark" tool, marked in the red box in Figure 7, the user can select one of the ready-made bookmarks or create new, for automatic navigation, in the area of interest.

Figure 7

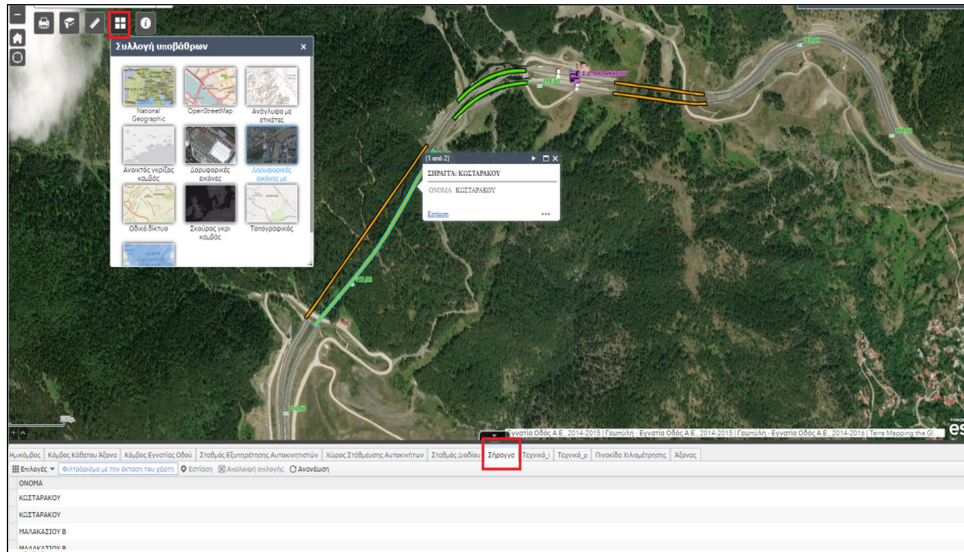




## -Basemap Gallery

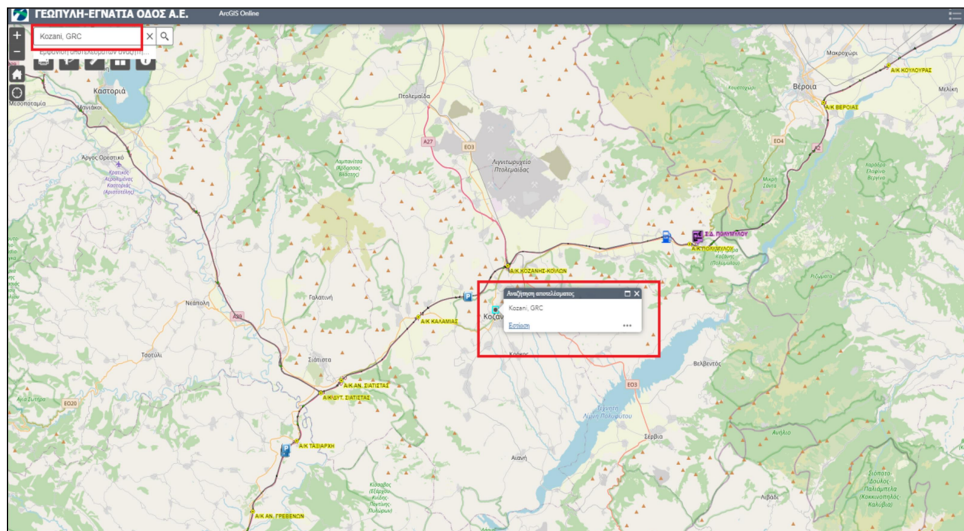
User can change basemap, (figure 8) choosing the most appropriate from Basemap Gallery

Figure 8



-Search on the map of a specified address or place. Automatic navigation by entering the exact address or settlement.

Figure 9

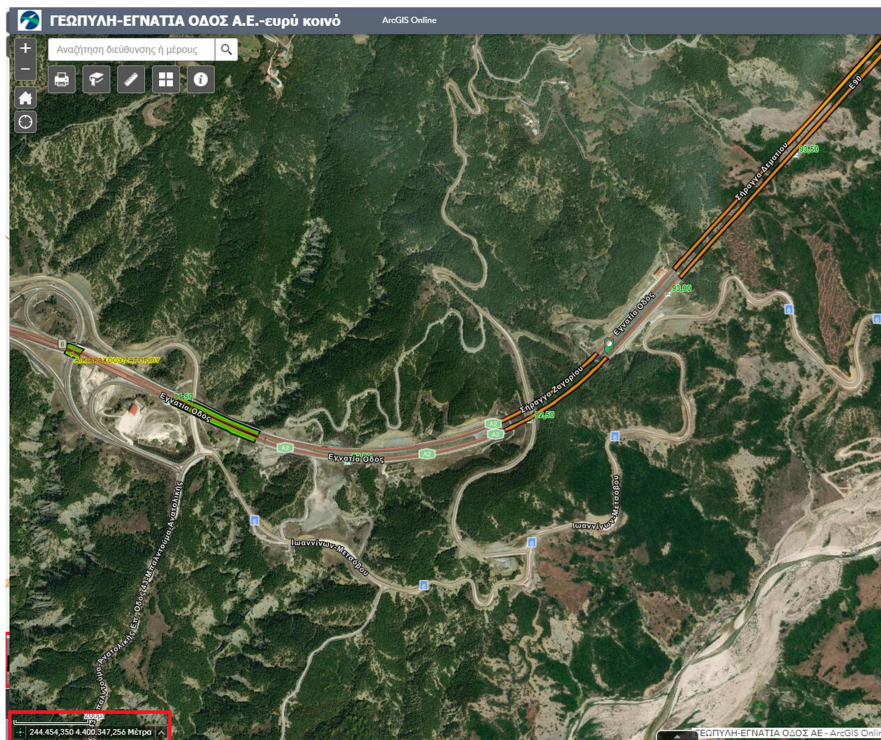


-Click to enable Clicking map to get coordinates

by selecting the tool, as noted in the red box of figure 10 and locating the point of interest on the map, the coordinates of the point are displayed in the Greek Grid (ΕΓΣΑ'87) and in WGS'84.

Κάντε κλικ στον χάρτη για να λάβετε τις συντεταγμένες

Figure 10



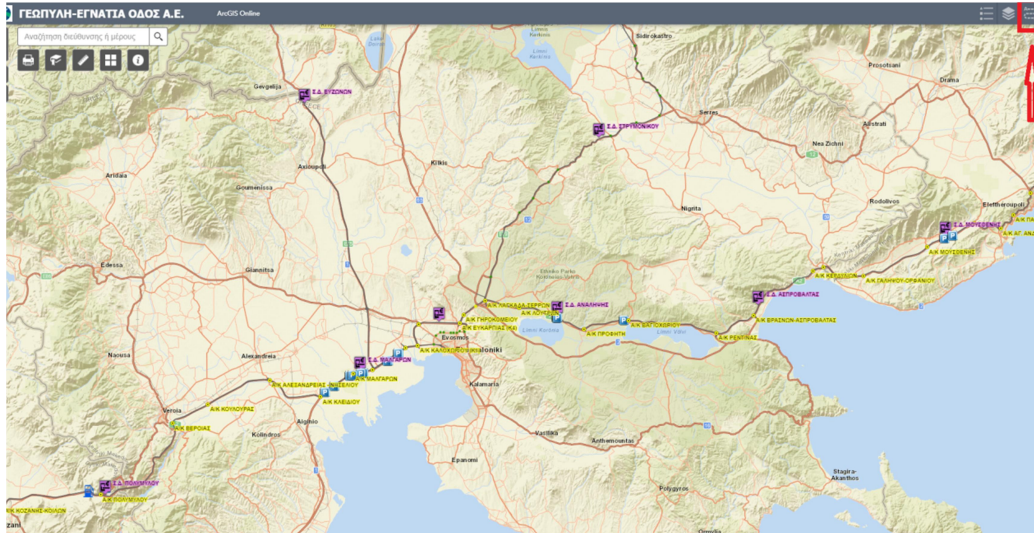


## Directions



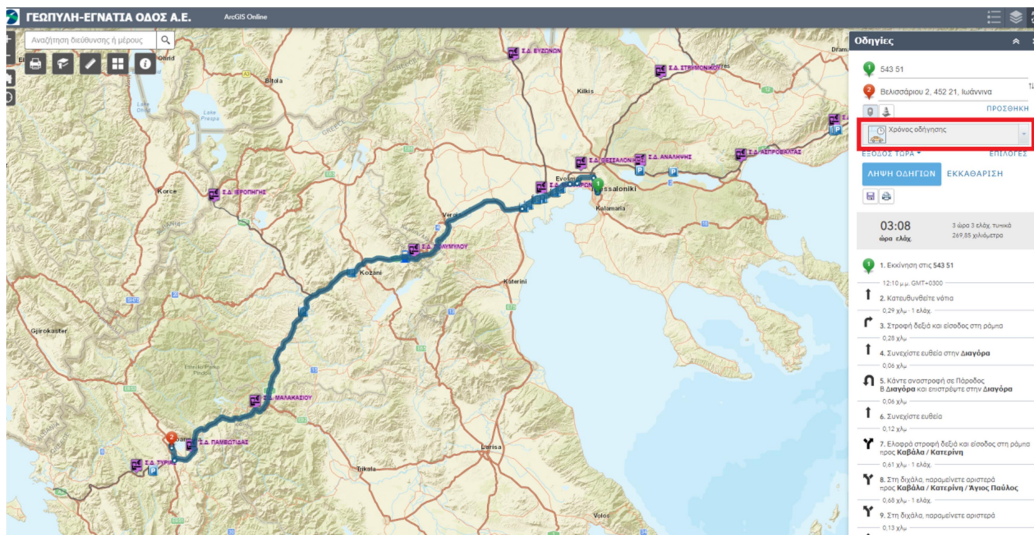
It concerns only users with certified access to Geoportal platform, through which they have additional functionality, regarding routing

Figure 11



Routing between two or more points defined by the user, either by marking on the map or by entering the address.

Figure 12



More information about the application please contact:

Geoportal/ GIS & Survey Unit of "EGNATIA ODOS SA"

email: [gis@egnatia.gr](mailto:gis@egnatia.gr)